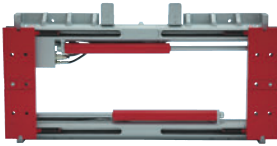


The **fork positioner range RZV** feature bar guides and can be used also with long forks. The well balanced frame design offers durability and excellent visibility. The forks are moved on adapters and can open a little wider than the frame width. The adapter design allows the use of hook-on and/or bolt-on forks. The RZV range is available with constant or integral sideshift.



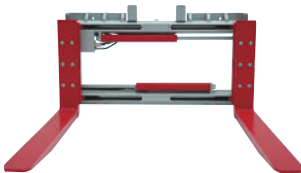
Type RZV-S, constant sideshift, no forks



Type RZV, integral sideshift (via valve), no forks



Type RZV-GS, constant sideshift, bolt-on forks



Type RZV-G, integral sideshift (via valve), bolt-on forks



More than 60 years experience