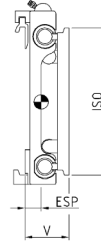
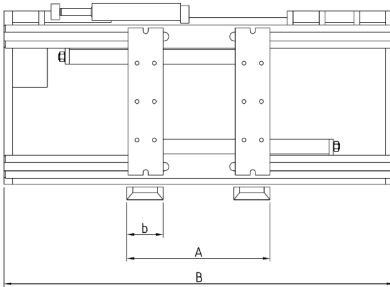


Sideshifting fork positioner

constant sideshift, no forks

The sideshifting fork positioner type RZV-S uses bar tube guides for positioning of forks. The simple design offers reliability and excellent operator visibility. Hook-on forks can be used. The constant sideshift operates at any fork position.



type	lift truck capacity tons	capacity kg/mm LC	ISO	B mm	A mm	b mm	sideshift mm	V LLC mm	ESP COG mm	weight kg
RZV 50 S	4,0-5,0/600	5000/600	IV	1250	490-1330	150	+/- 100	180	73	335
				1350	490-1430					357
				1450	490-1530					383
				1550	490-1630					409
RZV 60 S	5-6,0	6000/600	IV	1460	560-1560	150	+/- 160	190	75	510
				1860	560-1960					590
RZV 80 S	7,0-8,0/600	8000/600	IV	1800	560-1900	200	+/- 160	190	72	590
				1860	560-1960					600
				2000	560-2100					605
				2060	560-2160					610
				2260	560-2360					660
				2400	560-2500					710
RZV 100 S	8,0/900	8000/900	IV	2060	560-2160	200	+/- 160	216	70	800
				2260	560-2360					855
				2400	560-2500					910
RZV 110 S	9,0/900-8,0/1100	8000/1100	IV	2060	560-2160	200	+/- 160	218	72	820
				2260	560-2360					875
				2400	560-2500					930

Load backrest for clamp and fork positioners

type	ISO	width B mm	height* h mm
LS-K 25	II	700-1100	1000
		1120-1350	1000
LS-K 45	III	900-1150	1200
		1200-1750	1200
LS-K 80	IV	1250-1800	1500
		1850-2400	1500

* ISO 2328-A

- Includes hoses and couplings
- 2 hydraulic functions required
- Clamping of goods not allowed / possible